



TEST REPORT

7-6, Gomak-Ri, Wolgot-Myeon, Gimpo-Si, Gyeonggi-Do, KOREA

TEL 82-31-999-3000

FAX 82-31-999-3001

Report No. : TAK-015598

Receipt Date : Nov.11.2009

Customer : Jae Dong Oh

Test Date : Nov.18.2009

Polypenco Korea Co.,Ltd.

#97, Samjung-Dong, Ojung-Ku, Buchun-Si, Kyenggi-Do, Korea.

Sample : PLASTIC SPECIMEN(POM-C)

Testing Environment : Temperature(22°C ~ 26°C), Relative humidity (55% ~ 65%)

Test method : Refer to following pages

Testing Date : Nov.12.2009 ~ Nov.18.2009

Test result : Refer to following pages

Attachment : Flowchart and Sample pictures

USAGE : QUALITY CONTROL

NOTE : 1. The test results on this test report are only limited to the samples and sample names provided by the customer and KTR do not guarantee the quality of all products of the customer.
2. This test report shall not be used for public relation, advertisement, lawsuit and any other purposes outside the scope of its defined usage.

Jung-Woo Park

Prepared by Jung-Woo Park
Tel: +82-31-999-3107
E-mail: pjw547@ktr.or.kr

Sung-Taeg Hong

Reviewed by Sung-Taeg Hong
Technical Manager
E-mail: prohong@ktr.or.kr

Nov.18.2009

Korea Testing & Research Institute

President





TEST REPORT

Report No : TAK-015598

Sample : PLASTIC SPECIMEN(POM-C)

TEST RESULT

Test Items	Unit	Sample	Results	MDL	Test Methods
Pb	mg/kg		Not Detected	5	IEC 62321 Ed. 1.0 b : 2008 (AAS)
Cd	mg/kg		Not Detected	1	IEC 62321 Ed. 1.0 b : 2008 (AAS)
Hg	mg/kg		Not Detected	1	IEC 62321 Ed. 1.0 b : 2008 (AAS)
Cr(VI)	mg/kg		Not Detected	2	IEC 62321 Ed. 1.0 b : 2008 (UV/Vis)
Total-PBBs	mg/kg		Not Detected	10	IEC 62321 Ed. 1.0 b : 2008 (GC/MS)
Mono-BB	mg/kg		Not Detected	10	IEC 62321 Ed. 1.0 b : 2008 (GC/MS)
Di-BB	mg/kg		Not Detected	10	IEC 62321 Ed. 1.0 b : 2008 (GC/MS)
Tri-BB	mg/kg		Not Detected	10	IEC 62321 Ed. 1.0 b : 2008 (GC/MS)
Tetra-BB	mg/kg		Not Detected	10	IEC 62321 Ed. 1.0 b : 2008 (GC/MS)
Penta-BB	mg/kg		Not Detected	10	IEC 62321 Ed. 1.0 b : 2008 (GC/MS)
Hexa-BB	mg/kg		Not Detected	10	IEC 62321 Ed. 1.0 b : 2008 (GC/MS)
Hepta-BB	mg/kg		Not Detected	10	IEC 62321 Ed. 1.0 b : 2008 (GC/MS)
Octa-BB	mg/kg		Not Detected	10	IEC 62321 Ed. 1.0 b : 2008 (GC/MS)
Nona-BB	mg/kg		Not Detected	10	IEC 62321 Ed. 1.0 b : 2008 (GC/MS)
Deca-BB	mg/kg		Not Detected	10	IEC 62321 Ed. 1.0 b : 2008 (GC/MS)
Total-PBDEs	mg/kg		Not Detected	10	IEC 62321 Ed. 1.0 b : 2008 (GC/MS)
Mono-BDE	mg/kg		Not Detected	10	IEC 62321 Ed. 1.0 b : 2008 (GC/MS)
Di-BDE	mg/kg		Not Detected	10	IEC 62321 Ed. 1.0 b : 2008 (GC/MS)
Tri-BDE	mg/kg		Not Detected	10	IEC 62321 Ed. 1.0 b : 2008 (GC/MS)
Tetra-BDE	mg/kg		Not Detected	10	IEC 62321 Ed. 1.0 b : 2008 (GC/MS)
Penta-BDE	mg/kg		Not Detected	10	IEC 62321 Ed. 1.0 b : 2008 (GC/MS)
Hexa-BDE	mg/kg		Not Detected	10	IEC 62321 Ed. 1.0 b : 2008 (GC/MS)
Hepta-BDE	mg/kg		Not Detected	10	IEC 62321 Ed. 1.0 b : 2008 (GC/MS)
Octa-BDE	mg/kg		Not Detected	10	IEC 62321 Ed. 1.0 b : 2008 (GC/MS)
Nona-BDE	mg/kg		Not Detected	10	IEC 62321 Ed. 1.0 b : 2008 (GC/MS)
Deca-BDE	mg/kg		Not Detected	10	IEC 62321 Ed. 1.0 b : 2008 (GC/MS)

Notes : N.D. = Not Detected
MDL = Method Detection Limit



TEST REPORT

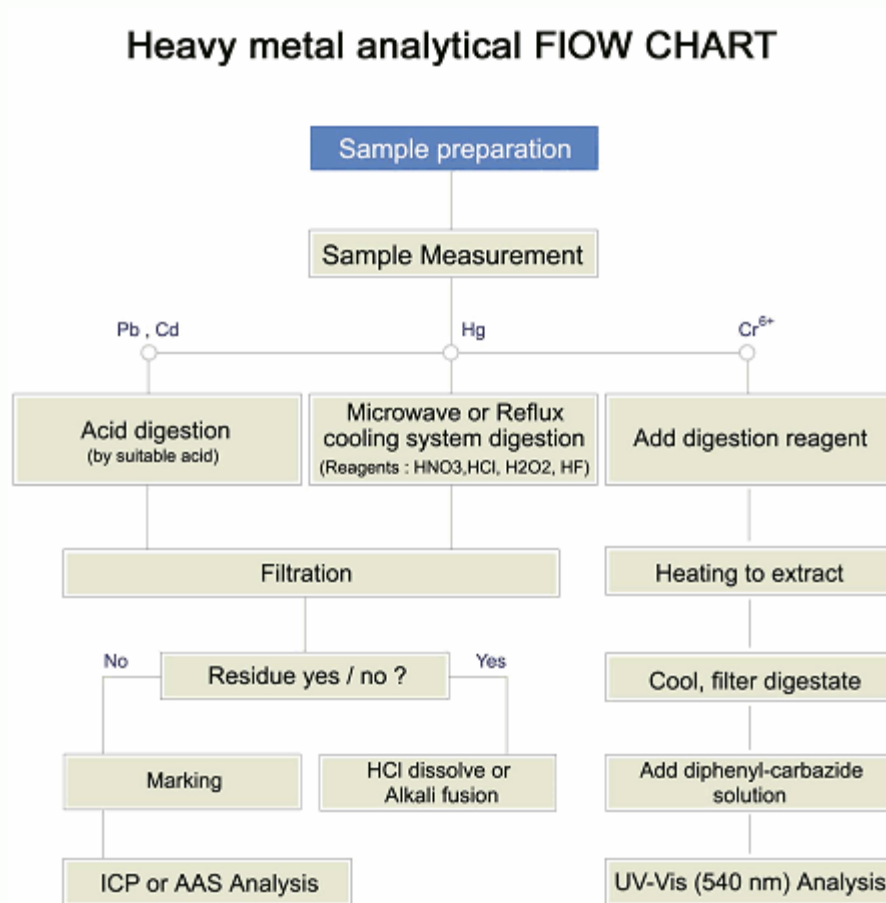
Repot No : TAK-015598

Sample : PLASTIC SPECIMEN(POM-C)

Pb : Tested by Hyun-Sik Kim(Tel : 031-999-3127)
 Cd : Tested by Hyun-Sik Kim(Tel : 031-999-3127)
 Hg : Tested by Hyun-Sik Kim(Tel : 031-999-3127)
 Cr6+ : Tested by Hyun-Sik Kim(Tel : 031-999-3127)

The samples were dissolved totally by pre-conditioning method according to below flow chart.

Flow Chart





TEST REPORT

Report No : TAK-015598

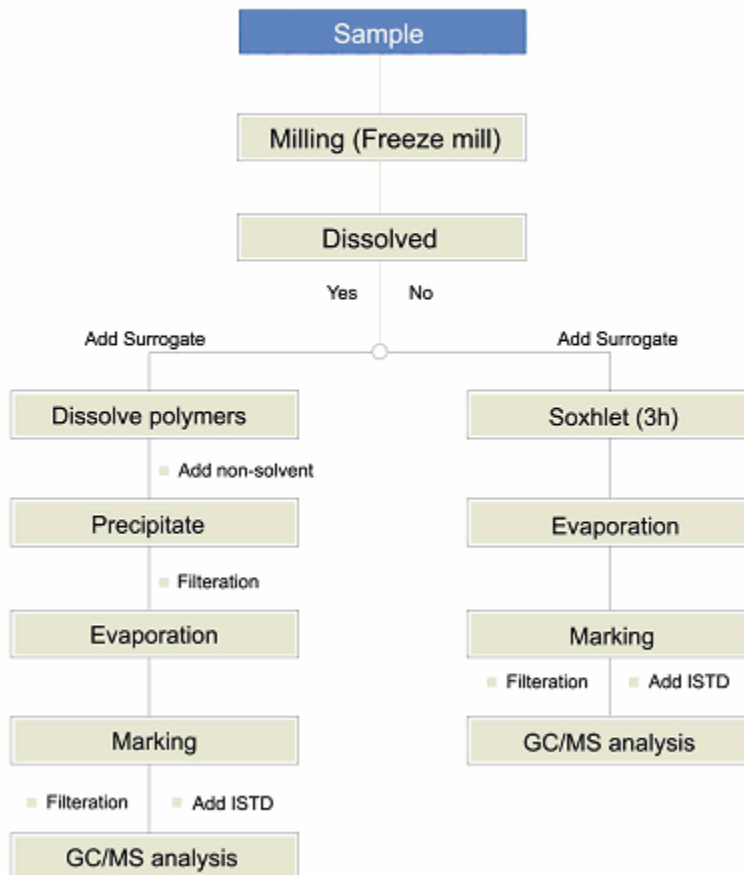
Sample : PLASTIC SPECIMEN(POM-C)

PBBs : Tested by Jung-Woo Park(Tel : 031-999-3107)
 PBDEs : Tested by Jung-Woo Park(Tel : 031-999-3107)

The samples were dissolved totally by pre-conditioning method according to below flow chart.

Flow Chart

Flow Chart of PBB and PBDE Analysis





TEST REPORT

Report No : TAK-015598

Sample : PLASTIC SPECIMEN(POM-C)

Sample Photo

시료 확인표			
품 목 명	플라스틱시편(POM-C)		
접수번호	TAK-015598	접수일자	2009-11-11
주무부서	품질확측팀	발급일자	2009-11-18
협조부서	소재평가팀		
특이사항	- 시료분리 불가 : 협조부서와 나누어		
시료저리	폐기	상담자	윤철민
상담 ID : 2808679 4011			
※ 반드시 시료에 부착하세요!			

